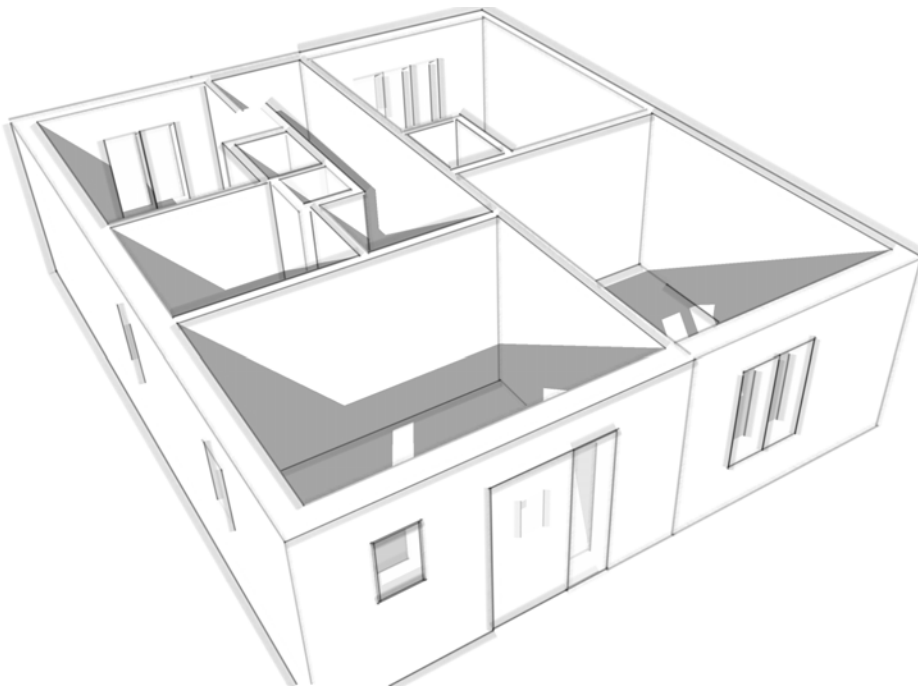


**PRESS RELEASE: 5th OCTOBER 2010**

**TERRAPIN PROVIDES AN OFFSITE SOLUTION FOR SUSTAINABLE HOMES**

Offsite construction specialist Terrapin is pioneering innovative, cost-effective solutions that meet the latest legislation for sustainable homes.

Terrapin has taken its renowned Hybred® concept and applied it to developments that are required to meet Code for Sustainable Homes Level 4 or above, providing homes that meet the highest environmental performance requirements, whilst remaining within budget constraints. A recent project has seen Terrapin's Hybred® concept being developed for use on a number of bungalows, to great effect, but it could equally be applied to five storey apartments, demonstrating the flexibility of the system.



Terrapin has gone all out to ensure the design is scalable to suit even the highest levels of the Code for Sustainable Homes, with the incorporation of features such as rainwater harvesting and the option of a monopitch roof, which incorporates sun pipes and PV panels. The design also allows for the inclusion of a mechanical ventilation heat recovery (MVHR) system, which adds to its environmental credentials, as well as offering low maintenance.

Terrapin's Managing Director Adrian Day explains: "In reality, it means we can deliver a single storey Code Level 4 property for under £100k, making it an attractive option for many social housing providers. We can also extend the concept to meet the requirements of Code Levels 5 and 6, by combining the very best in offsite design with our expertise in delivering sustainable buildings."

Terrapin's Hybred® modular building solution provides the potential to achieve 'A' rated energy performance through the use of innovative cladding methods to optimise insulation levels and reduce heat loads. The flexibility of Hybred® also means that renewable options, such as green roofs, low emissivity glazing and solar panels can all be integrated within the system, providing a low carbon footprint for a building.

Adrian Day continues: "We offer a complete turnkey solution, by working with the client from the initial design and pre-planning stages right through to handover. Over 85 per cent of the structure can be built in the factory, which minimises the amount of time of site. Even the roof is completed offsite, which means the whole building could be watertight within just one day. The end result is a building that meets the performance requirements of the highest Code levels, backed up by all the benefits of offsite construction."

In addition, the building's lifetime carbon emissions can be minimised by specifying low embedded carbon building products that contain a high level of recycled materials. As well as meeting exceptional performance standards, Hybred® also allows for the integration of non-rectangular modules and to introduce corner-to-corner glazed walls, using Terrapin's renowned Corner Loaded Module. Terrapin offers a range of options for exterior and interior finishes and a variety of service options to give long term cost savings.



Terrapin is also the first offsite manufacturer to gain accreditation to the Buildoffsite Lloyds Register Scheme, which is integral to a newly launched building warranty scheme. This is being developed by the Royal Chartered Institute of Chartered Surveyors, Lloyds' Register, BLP (Allianz) and the Council of Mortgage Lenders (CML) and provides assurance to the lending community that buildings will be sufficiently durable as to be readily saleable throughout the duration of two mortgage terms, which equates to 60 years. It also provides the peace of mind that the structural integrity of its buildings will not have a negative impact on the mortgage security during that term.

Terrapin is also one of very few offsite companies that provide a complete turnkey service, including concept and design, manufacturing, siteworks, though to landscaping and final handover.

The company operates to ISO90001 quality standards and is renowned for its right first time approach. This means that every component is checked before leaving the factory – ensuring clients of the highest quality build on site.

The company has pioneered Modern Methods of Construction since 1949 and is renowned in the construction industry for its bespoke service, its complete project management and its flexible and individual approach to each project.

For more information on Terrapin, telephone 01908 270900 or email: [info@terrapiin-ltd.co.uk](mailto:info@terrapiin-ltd.co.uk) or visit the website [www.terrapiin-ltd.co.uk](http://www.terrapiin-ltd.co.uk).

END

Notes to editors:

Terrapin is a privately owned company and is one of the UK's leaders in offsite construction. It has been expanding the potential of modern methods of construction (MMC) since 1949 and now offers a range of complementary MMC technologies that can be used individually or combined to create bespoke building solutions for a wide range of applications.

Terrapin is the first company to be accredited under Buildoffsite's new supplier registration scheme operated by Lloyd's Register. The scheme standardises all aspects of the offsite process and ensures best practice, offering clients confidence in the assured levels of competence, methodology and safe working of the accredited supplier.

**Press enquiries/colour separations: [marina@dragonflypr.co.uk](mailto:marina@dragonflypr.co.uk)**